

TOKUDA YASOKICHI III (1933 – 2009)

Tokuda Yasokichi III was one of the world's most famous Kutani potters. Born in Ishikawa prefecture, he was designated a Living National Treasure in 1997 for his mastery of the *saiyu* glaze technique. Yasokichi III was the one responsible for innovating this glaze technique which was based on traditional Kutani colored glaze enamels. He developed techniques handed down from his grandfather, Tokuda Yasokichi I (1873–1956) and later, his father, Tokuda Yasokichi II (1907–1997). Through his *saiyu* glaze (vivid enamel glaze) technique, Yasokichi III created his own designs characterized by delicate shading and beautiful color contrasts. His honors include the acceptance into The Issui-kai Pottery and Porcelain Exhibition (1958), and multiple prizes such as the Japan Traditional Art Crafts Association Chairman's Award (1977), the Grand Prize of The International Pottery and Porcelain Exhibition (1990), and the Medal with Purple Ribbon given by the Emperor of Japan (1993).

SELECTED AWARDS AND EXHIBITIONS

- 2017 The 64th Japan Traditional Kōgei Exhibition, Japan
- 2015 SOFA Chicago, Illinois, US
- 2014 Contemporary Japanese Ceramics, Embassy of Japan, Washington D.C., US
- 2007 Crafting Beauty in Modern Japan, British Museum, London, US

SELECTED PUBLIC COLLECTIONS

The British Museum | London, United Kingdom
The Metropolitan Museum of Art | New York, US
Victoria and Albert Museum | London, UK
Arthur M. Sackler Gallery, Smithsonian Institution | Washington DC, US

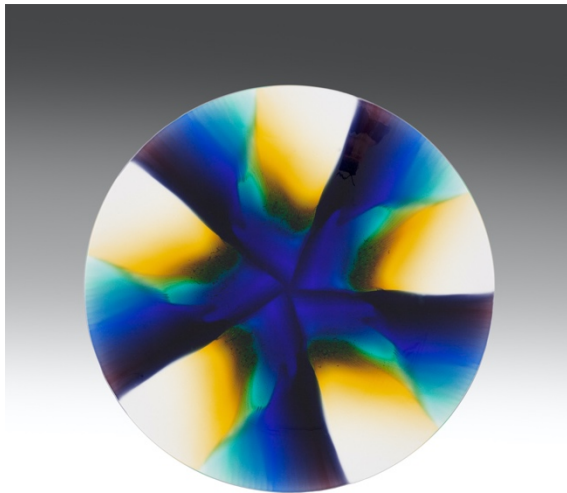
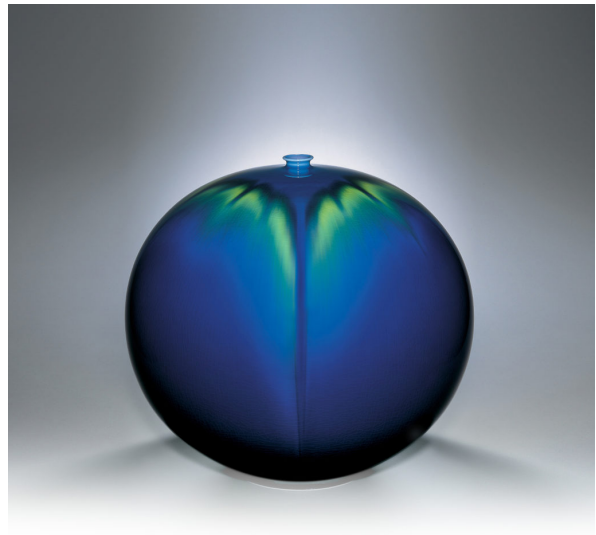


Plate Kashin (Pistil), 1998; porcelain with vivid colored glaze (*yōsai*);
h. 1 3/4 x dia. 20 5/8 in. (4.5 x 52.5 cm)



Round Vase, 2000; porcelain with vivid colored glaze (*yōsai*);
h. 13 1/4 x dia. 14 1/2 in. (33.5 x 36.5 cm)