

MUROSE KAZUMI (B. 1950)

Born to established and esteemed *urushi* (lacquer) artist Murose Shunji (1911-1989), the young Murose became aware from an early age of the need to bridge two worlds: that of tradition and that of forced adaptation to a Westernized lifestyle. Murose learned *urushi* in earnest at the Tokyo University of the Arts, and studied under the *urushi* master and Living National Treasure Matsuda Gonroku (1896-1986). Gonroku's principle student, Taguchi Yoshikuni (1923-1998), was also Murose's mentor. Under their tutelage, Murose learned as a craftsman about the rich history and techniques of *urushi*.

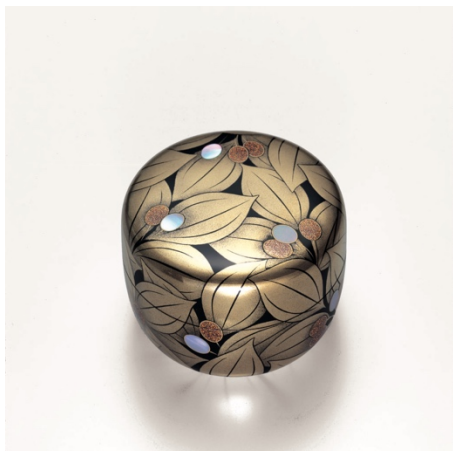
As an artist, he followed the artistic spirit of Matsuda Gonroku, and especially of Taguchi, to refine and develop his own working styles. His works are deeply rooted in tradition while his designs explore new ways of expressing the beauty of *urushi* that speaks to the modern world. Apart from his creative works, he devotes his time in Japan as well as abroad to the restoration of cultural assets. In 2008, he was designated Living National Treasure.

SELECTED AWARDS AND EXHIBITIONS

- 2016 Asia Week, New York, US
- 2014 Engendering Beauty, Preserving Techniques: Artworks by Living National Treasures, Tokyo National Museum, Tokyo, Japan
- 2013 URUSHI: Masterpieces of Lacquerware by Kazumi Murose, Portland Japanese Garden, Oregon, US
- From Crafts to Kōgei: In Commemoration of the 60th Japan Traditional Art Crafts Exhibition, National Museum of Modern Art, Tokyo
- Contemporary Kōgei Styles in Japan, Morikami Museum and Japanese Gardens, Delray Beach, Florida, US
- 2007 Crafting Beauty in Modern Japan, British Museum, London, UK

SELECTED PUBLIC COLLECTIONS

- Victoria and Albert Museum | London, United Kingdom
- Jingū Museum of Fine Arts | Ise, Mie, Japan
- Narukawa Art Museum | Hakone, Kanagawa, Japan
- National Museum of Modern Art | Tokyo, Japan



Tendai Uyaku, 2014; lacquer with *maki-e* and mother-of-pearl inlay;
h. 2 1/4 x dia. 3 3/8 in. (5.6 x 8.6 cm)



Yugao Maki-e Hiranatsume, 2014; lacquer;
h. 2 1/4 x dia. 3 3/8 in. (5.6 x 8.6 cm)